

COVENT GARDEN

capco★

MARKET BUILDING AND PIAZZA LIGHTING



BACKGROUND

Capital & Counties are bringing forward proposals to improve the lighting within the Covent Garden Piazza to enhance the setting of the historic market building and increase the visibility of key areas, such as the spaces for street performers.

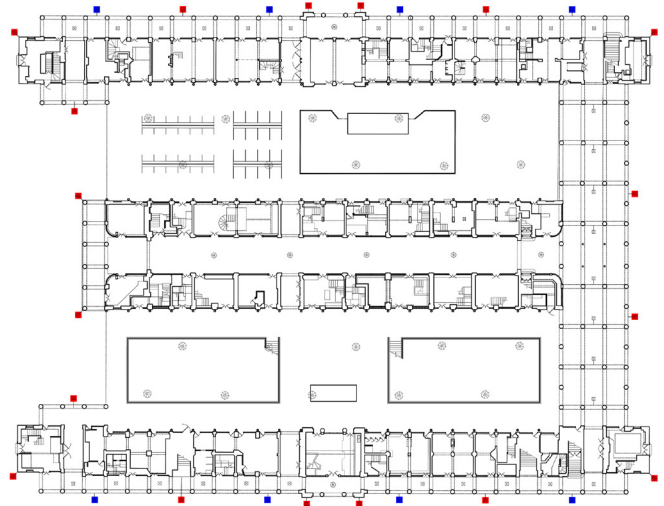
The proposals seek to build upon a consent from 2016, which has been implemented and is intended to make the Piazza feel brighter, safer and more attractive for local residents, workers and visitors, as well celebrate the iconic grade II listed building.

GENERAL LIGHTING

To improve the general levels of lighting throughout the Piazza, we are proposing to introduce 8 new, replica heritage lanterns on the north and south elevations of the Market Building. These will be aligned to the existing lanterns to ensure they are historically accurate and relate to those already in place.

We are also proposing that all of the lanterns' light sources be replaced with gas-effect LED, low glare units to improve the look and visual comfort.

Controllable light fittings will allow for different light scenes dependant on times of the day, year, or for special events. Downlights will highlight the granite columns and balustrade lighting with colour change capacity which will be introduced to match the Royal Opera House lighting, which Capco funded.



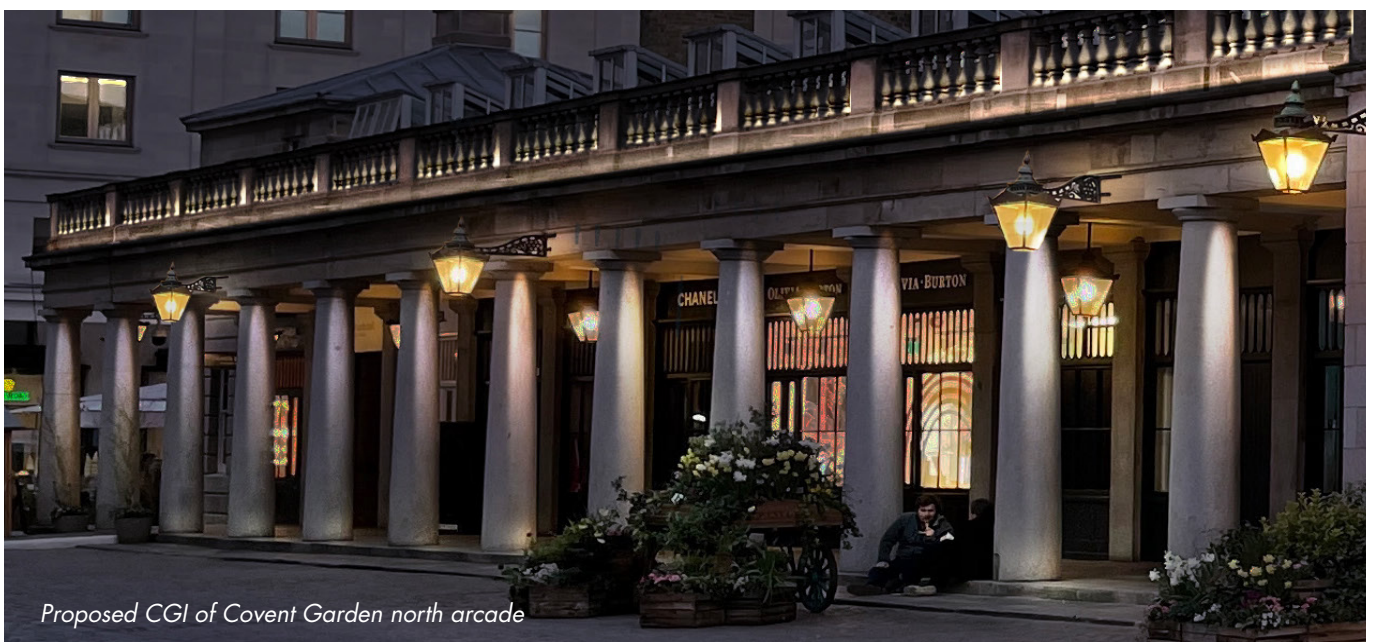
Proposed lighting improvements – Southern façade



Existing heritage lanterns currently installed on site



Additional heritage lanterns to replicate those existing to improve artificial light levels at street level



Proposed CGI of Covent Garden north arcade

ELEVATIONS - POTENTIAL FITTINGS

As part of our commitment to improving the lighting within the Piazza, we are also proposing to use a variety of LED sustainable lighting solutions including:



A

Additional heritage lanterns to replicate existing lanterns and improve artificial light levels at street level



D

Discreet, fully adjustable LED spotlights to further highlight details on the façade and chimneys



B

Linear LED lights with narrow beams mounted at the base of the balustrade to light up the front face of the elevation



E

Additional flexible LED strips for mounting within the cove on the northern elevation for soft, indirect illumination



C

Flexible LED lighting to provide a soft ambient glow on architectural details of the market building



F

Surface mounted downlighting for columns on each column, similar to that used on the Royal Opera House



WEST PIAZZA & PERFORMANCE SPACE

WEST PIAZZA

Within the West Piazza, we are proposing to introduce flexibility to deploy a new art feature between January and March annually. This will replace the Christmas tree at the end of the festive season and provide new visual interest within the space for the first quarter of the year, with potential for new and interesting installations.

PERFORMANCE SPACE

Finally, we are proposing to replace existing old technology spotlights within the western elevation of the Market Building to better illuminate the performance space. This will help attract people to the space and create a more welcoming and inviting space to watch the street performers, with potential additional controls on scenes.

Capco supports Westminster Employment Service (WES), find out more [here](#).



NEXT STEPS

Thank you for taking the time to review our proposals to improve the lighting within the Covent Garden Piazza.

We would be grateful if you could provide us with your thoughts via our online feedback form that can be accessed via our consultation website, coventgardenconsultation.co.uk or by clicking [here](#).

If you have any questions or would like to provide us with your feedback directly, please email CoventGardenLighting@kandaconsulting.co.uk or call **0203 900 3676**.

